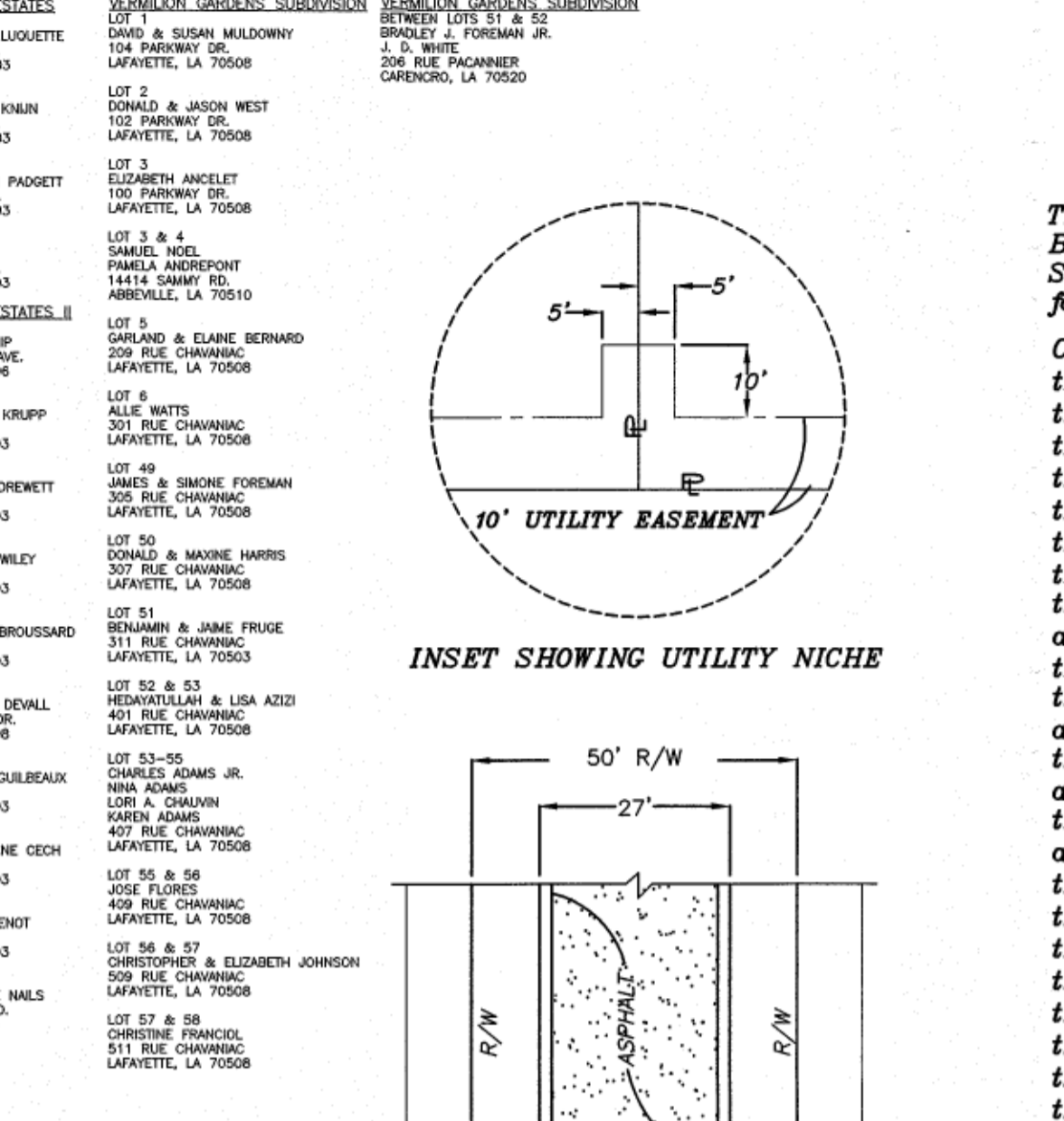
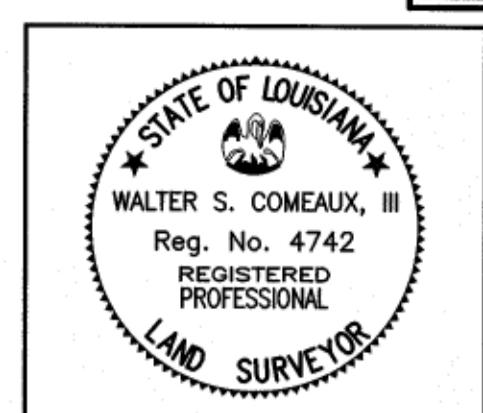
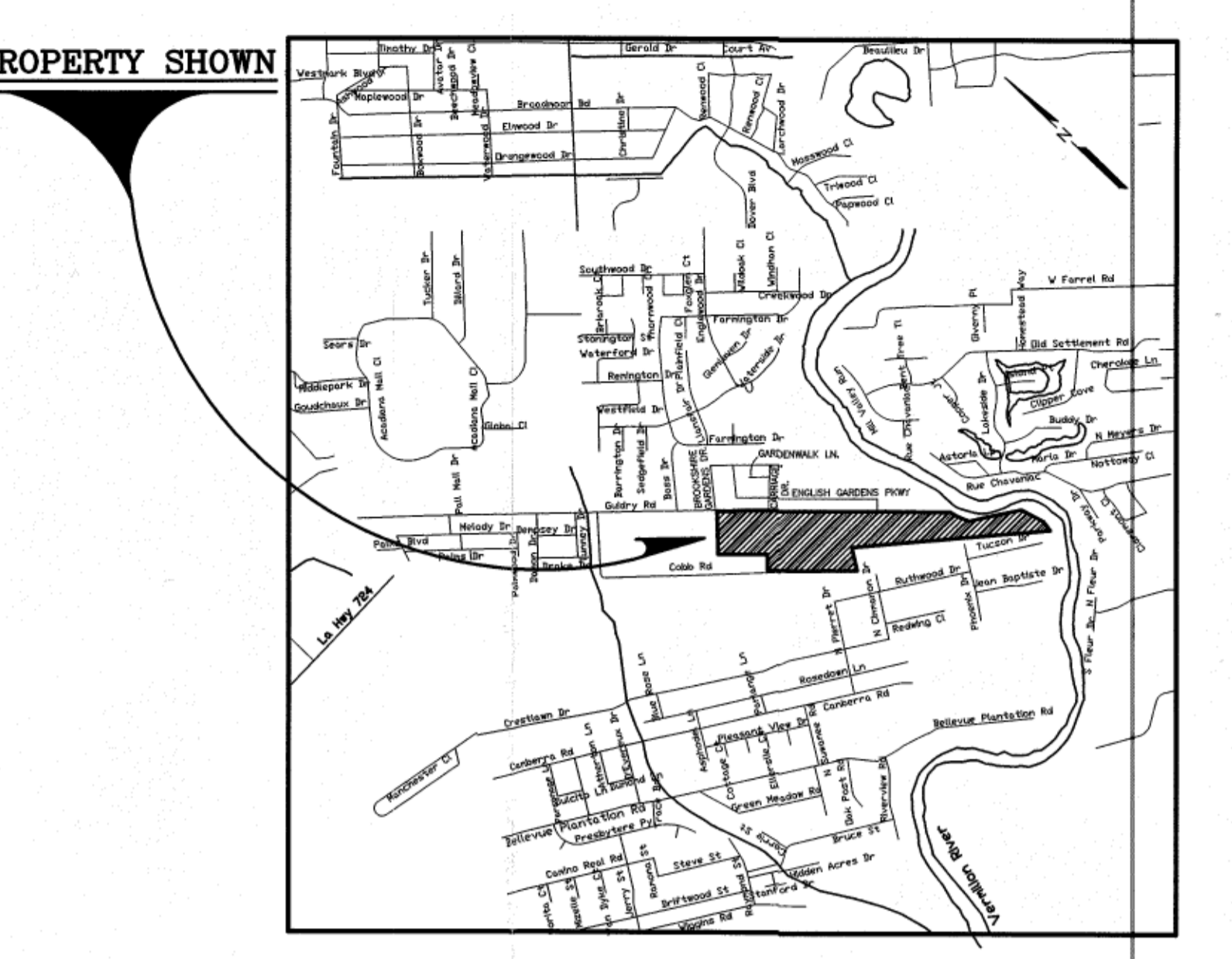


LINE/CURVE	CHORD BEARING	CHORD	ARC	RADIUS
L1	S83°49'50"W	36.15	36.99	50.00
L2	S73°38'49"W	26.03	27.38	25.00
L3	S01°54'08"E	34.84	35.55	25.00
L4	N85°36'21"E	34.94	35.88	25.00
L5	S00°27'55"W	35.24	36.11	25.00
L6	S45°12'40"E	18.07	18.07	600.00
L7	N46°04'26"W	5.12	5.12	25.00
L8	N85°50'24"E	35.39	36.27	25.00
L9	S01°04'26"E	35.38	36.27	25.00
L10	S36°06'31"E	69.22	69.57	200.00
L11	S27°41'51"E	37.96	38.02	200.00
L12	N33°28'51"E	22.19	22.19	150.00
L13	N75°08'17"W	20.41	21.03	25.00
L14	S42°43'13"E	63.40	63.63	50.00
L15	S39°50'01"W	43.90	45.45	50.00
L16	N85°50'24"E	43.90	45.45	50.00
L17	N32°26'55"W	49.39	51.05	50.00
L18	N26°56'55"W	20.41	21.03	25.00
L19	N44°55'24"W	42.65	42.73	200.00
L20	N26°56'55"W	20.41	21.03	25.00
L21	N32°26'55"W	49.39	51.05	50.00
L22	S86°29'26"W	36.85	41.44	150.00
L23	S22°27'24"E	80.59	83.79	50.00
L24	S15°10'06"E	5.51	5.51	25.00
L25	N51°02'36"E	10.03	10.03	25.00
L26	S38°59'30"E	19.20	19.71	25.00
L27	S87°10'28"W	29.37	29.37	50.00
L28	N74°13'16"E	28.87	30.77	25.00
L29	N03°33'31"E	33.79	37.10	25.00
L30	N62°39'26"W	17.06	17.06	25.00
L31	N82°39'26"W	17.06	17.06	25.00
L32	S88°55'54"W	35.38	36.27	25.00
L33	S14°06'42"W	24.88	26.02	25.00
L34	S30°06'00"W	71.69	79.94	50.00
L35	S82°39'26"W	17.06	17.06	25.00
L36	N50°12'25"W	80.79	84.08	50.00
L37	S86°18'59"E	27.96	27.96	25.00
L38	S40°52'18"W	60.44	64.31	50.00
L39	S63°48'33"W	12.31	12.44	25.00
L40	S46°44'22"W	2.45	2.48	25.00
L41	S01°04'26"E	35.38	36.27	25.00
L42	S88°55'54"W	35.38	36.27	25.00
L43	S88°55'54"W	35.38	36.27	25.00
L44	S01°04'26"E	35.38	36.27	25.00
L45	S88°55'54"W	35.38	36.27	25.00
L46	S88°55'54"W	35.38	36.27	25.00
L47	S88°55'54"W	35.38	36.27	25.00
L48	S88°55'54"W	35.38	36.27	25.00
L49	S88°55'54"W	35.38	36.27	25.00
L50	S88°55'54"W	35.38	36.27	25.00
L51	S88°55'54"W	35.38	36.27	25.00
L52	S88°55'54"W	35.38	36.27	25.00
L53	S88°55'54"W	35.38	36.27	25.00
L54	S88°55'54"W	35.38	36.27	25.00
L55	S88°55'54"W	35.38	36.27	25.00
L56	S88°55'54"W	35.38	36.27	25.00
L57	S88°55'54"W	35.38	36.27	25.00
L58	S88°55'54"W	35.38	36.27	25.00
L59	S88°55'54"W	35.38	36.27	25.00
L60	S88°55'54"W	35.38	36.27	25.00
L61	S88°55'54"W	35.38	36.27	25.00
L62	S88°55'54"W	35.38	36.27	25.00
L63	S88°55'54"W	35.38	36.27	25.00
L64	S88°55'54"W	35.38	36.27	25.00
L65	S88°55'54"W	35.38	36.27	25.00
L66	S88°55'54"W	35.38	36.27	25.00
L67	S88°55'54"W	35.38	36.27	25.00
L68	S88°55'54"W	35.38	36.27	25.00
L69	S88°55'54"W	35.38	36.27	25.00
L70	S88°55'54"W	35.38	36.27	25.00
L71	S88°55'54"W	35.38	36.27	25.00
L72	S88°55'54"W	35.38	36.27	25.00
L73	S88°55'54"W	35.38	36.27	25.00
L74	S88°55'54"W	35.38	36.27	25.00
L75	S88°55'54"W	35.38	36.27	25.00
L76	S88°55'54"W	35.38	36.27	25.00
L77	S88°55'54"W	35.38	36.27	25.00
L78	S88°55'54"W	35.38	36.27	25.00
L79	S88°55'54"W	35.38	36.27	25.00
L80	S88°55'54"W	35.38	36.27	25.00
L81	S88°55'54"W	35.38	36.27	25.00
L82	S88°55'54"W	35.38	36.27	25.00
L83	S88°55'54"W	35.38	36.27	25.00
L84	S88°55'54"W	35.38	36.27	25.00
L85	S88°55'54"W	35.38	36.27	25.00
L86	S88°55'54"W	35.38	36.27	25.00
L87	S88°55'54"W	35.38	36.27	25.00
L88	S88°55'54"W	35.38	36.27	25.00
L89	S88°55'54"W	35.38	36.27	25.00
L90	S88°55'54"W	35.38	36.27	25.00
L91	S88°55'54"W	35.38	36.27	25.00
L92	S88°55'54"W	35.38	36.27	25.00
L93	S88°55'54"W	35.38	36.27	25.00
L94	S88°55'54"W	35.38	36.27	25.00
L95	S88°55'54"W	35.38	36.27	25.00
L96	S88°55'54"W	35.38	36.27	25.00
L97	S88°55'54"W	35.38	36.27	25.00
L98	S88°55'54"W	35.38	36.27	25.00
L99	S88°55'54"W	35.38	36.27	25.00
L100	S88°55'54"W	35.38	36.27	25.00

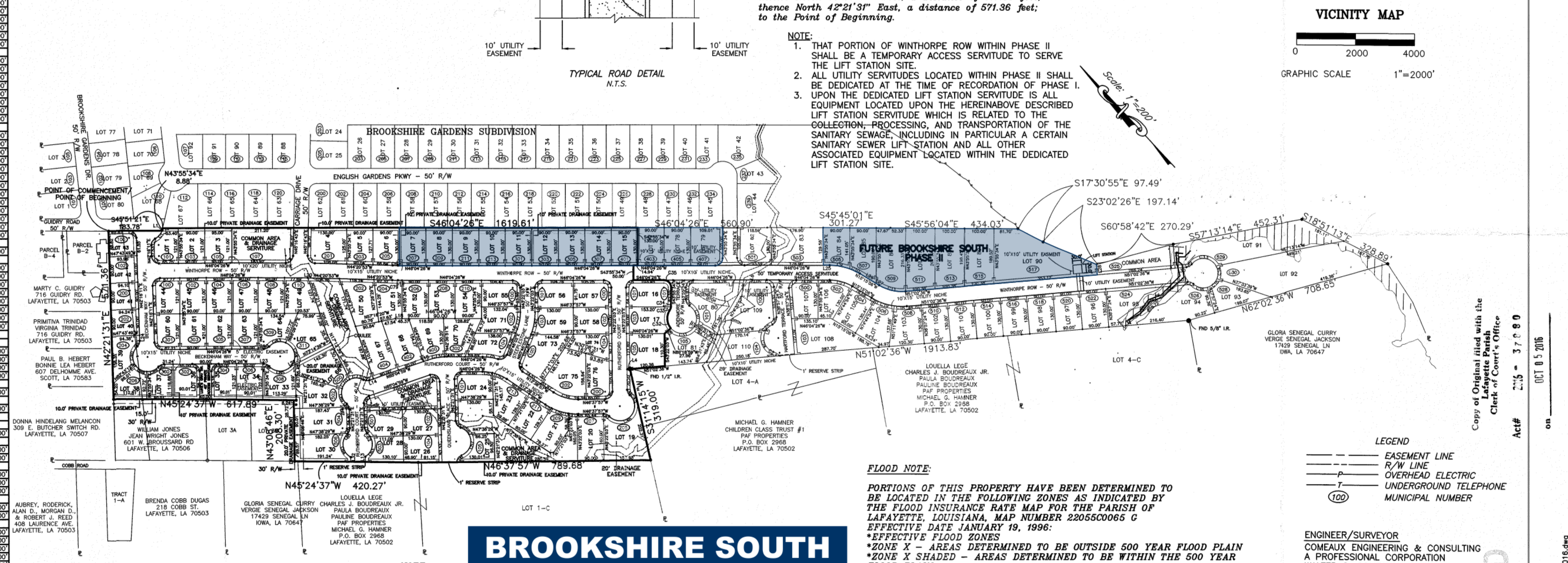
**LEGAL DESCRIPTION:**  
 That certain tract of land in Lafayette Parish, Louisiana, being located in Section 72, T-10-S, R-4-E. Said tract contains 30.449 acres and more fully described as follows:  
 Commencing at the Point of Beginning; thence South 45°51'21" East, a distance of 183.78 feet; thence North 45°55'34" East, a distance of 8.88 feet; thence South 46°04'26" East, a distance of 2180.51 feet; thence South 45°45'01" East, a distance of 301.27 feet; thence South 45°56'04" East, a distance of 434.03 feet; thence South 17°30'55" East, a distance of 97.49 feet; thence South 23°02'26" East, a distance of 197.14 feet; thence South 57°13'14" East, a distance of 452.31 feet; thence South 18°51'13" East, a distance of 328.89 feet; thence North 62°02'36" West, a distance of 708.65 feet; thence North 57°02'36" West, a distance of 1913.83 feet; thence South 31°14'15" West, a distance of 319.00 feet; thence North 46°37'57" West, a distance of 789.68 feet; thence North 45°24'37" West, a distance of 409.17 feet; thence North 42°21'31" East, a distance of 208.39 feet; thence North 45°24'37" West, a distance of 626.13 feet; thence North 42°21'31" East, a distance of 571.36 feet; to the Point of Beginning.



**LEGAL DESCRIPTION:**  
 That certain tract of land in Lafayette Parish, Louisiana, being located in Section 72, T-10-S, R-4-E. Said tract contains 30.449 acres and more fully described as follows:  
 Commencing at the Point of Beginning; thence South 45°51'21" East, a distance of 183.78 feet; thence North 45°55'34" East, a distance of 8.88 feet; thence South 46°04'26" East, a distance of 2180.51 feet; thence South 45°45'01" East, a distance of 301.27 feet; thence South 45°56'04" East, a distance of 434.03 feet; thence South 17°30'55" East, a distance of 97.49 feet; thence South 23°02'26" East, a distance of 197.14 feet; thence South 57°13'14" East, a distance of 452.31 feet; thence South 18°51'13" East, a distance of 328.89 feet; thence North 62°02'36" West, a distance of 708.65 feet; thence North 57°02'36" West, a distance of 1913.83 feet; thence South 31°14'15" West, a distance of 319.00 feet; thence North 46°37'57" West, a distance of 789.68 feet; thence North 45°24'37" West, a distance of 409.17 feet; thence North 42°21'31" East, a distance of 208.39 feet; thence North 45°24'37" West, a distance of 617.89 feet; thence North 42°21'31" East, a distance of 571.36 feet; to the Point of Beginning.



REVISED FINAL PLAT OF  
 BROOKSHIRE SOUTH SUBDIVISION PHASE I  
 A SINGLE FAMILY RESIDENTIAL SUBDIVISION  
 LOCATED IN SECTION 72, T-10-S, R-4-E  
 CITY OF LAFAYETTE  
 LAFAYETTE PARISH, LOUISIANA



**LEGAL DESCRIPTION:**  
 That certain tract of land in Lafayette Parish, Louisiana, being located in Section 72, T-10-S, R-4-E. Said tract contains 48.812 acres and more fully described as follows:  
 Commencing at the Point of Beginning; thence South 45°51'21" East, a distance of 183.78 feet; thence North 45°55'34" East, a distance of 8.88 feet; thence South 46°04'26" East, a distance of 2180.51 feet; thence South 45°45'01" East, a distance of 301.27 feet; thence South 45°56'04" East, a distance of 434.03 feet; thence South 17°30'55" East, a distance of 97.49 feet; thence South 23°02'26" East, a distance of 197.14 feet; thence South 57°13'14" East, a distance of 452.31 feet; thence South 18°51'13" East, a distance of 328.89 feet; thence North 62°02'36" West, a distance of 708.65 feet; thence North 57°02'36" West, a distance of 1913.83 feet; thence South 31°14'15" West, a distance of 319.00 feet; thence North 46°37'57" West, a distance of 789.68 feet; thence North 45°24'37" West, a distance of 409.17 feet; thence North 42°21'31" East, a distance of 208.39 feet; thence North 45°24'37" West, a distance of 626.13 feet; thence North 42°21'31" East, a distance of 571.36 feet; to the Point of Beginning.

**NOTE:**  
 THE PRIVATE STREET IS NOT TO BE MAINTAINED BY LAFAYETTE CONSOLIDATED GOVERNMENT.  
 NO ATTEMPT HAS BEEN MADE BY COMEAUX ENGINEERING & CONSULTING TO VERIFY TITLE, ACTUAL LEGAL OWNERSHIP, SERVITUDES, EASEMENTS, RIGHTS OF WAY OR OTHER BURDENS ON THE PROPERTY OTHER THAN THAT FURNISHED BY THE OWNER OR HIS/HER REPRESENTATIVE.  
**NOTE:**  
 REFERENCE PLAT "A MAP OF SURVEY SHOWING ESTATE OF J.C. LANDRY" PREPARED BY R. DOUGLAS McGEE & ASSOCIATES, LTD. REVISED PLAT DATED SEPTEMBER 24, 1980.  
**BASIS OF BEARINGS:**  
 OBTAINED FROM GPS OBSERVATIONS USING THE CORS NETWORK FOR CORRECTIONS  
**\*NOTE:**  
 20' DRAINAGE EASEMENT FROM APPARENT HIGH BANK AND INCLUSIVE OF CHANNEL ON BOTH SIDE OF CHANNEL.  
**NOTE:**  
 1/2 IRON RODS SET AT ALL CORNERS UNLESS OTHERWISE NOTED

**FLOOD NOTE:**  
 PORTIONS OF THIS PROPERTY HAVE BEEN DETERMINED TO BE LOCATED IN THE FOLLOWING ZONES AS INDICATED BY THE FLOOD INSURANCE RATE MAP FOR THE PARISH OF LAFAYETTE, LOUISIANA, MAP NUMBER 22055C0065 G EFFECTIVE DATE JANUARY 19, 1996:  
 \*EFFECTIVE FLOOD ZONES  
 \*ZONE X - AREAS DETERMINED TO BE OUTSIDE 500 YEAR FLOOD PLAIN  
 \*ZONE X SHADED - AREAS DETERMINED TO BE WITHIN THE 500 YEAR FLOOD PLAIN (BFE 16.0)  
 ANY STRUCTURE ENCLOSED ON THREE OR MORE SIDES, BUILT ON PROPERTY IN THE ONE HUNDRED AS DEPICTED ON THIS PLAT SHALL BE ELEVATED SO AS TO INSURE THE LOWEST FLOOR OF SUCH STRUCTURE IS LOCATED AT A MINIMUM OF ONE FOOT (1') ABOVE THE BASE FLOOD ELEVATION HEIGHT FOR THAT AREA AT THAT TIME.  
 PORTIONS OF THIS PROPERTY HAVE BEEN DETERMINED TO BE LOCATED IN THE FOLLOWING ZONES (AE, X-SHADED & X) AS INDICATED BY THE REVISED PRELIMINARY FLOOD INSURANCE RATE MAPS FOR THE PARISH OF LAFAYETTE, LOUISIANA, MAP NUMBER 22055C0165J & 22055C0170J REVISED PRELIMINARY DATE SEPTEMBER 6, 2011  
 I CERTIFY THAT THIS PLAT REPRESENTS AN ACTUAL GROUND SURVEY, IN ACCORDANCE WITH THE APPLICABLE MINIMUM STANDARDS OF BOUNDARY SURVEYING, AND THAT NO ENCROACHMENTS EXIST EITHER WAY ACROSS ANY OF THE PROPERTY LINES, UNLESS OTHERWISE SHOWN.  
 WALTER S. COMEAUX, III, P.L.S., REG. NO. 4742

**LEGEND:**  
 --- EASEMENT LINE  
 --- R/W LINE  
 --- OVERHEAD ELECTRIC  
 --- UNDERGROUND TELEPHONE  
 (100) MUNICIPAL NUMBER  
**ENGINEER/SURVEYOR:**  
 COMEAUX ENGINEERING & CONSULTING A PROFESSIONAL CORPORATION  
 WALTER S. COMEAUX, III, P.E., P.L.S.  
 P.O. BOX 452  
 BROUSSARD, LOUISIANA 70518  
 PH. 337-837-2210  
 PH. 337-837-2217  
**OWNER/DEVELOPER:**  
 SHIVERS PROPERTIES, LLC  
 C/O MR. BAILEY SHIVERS  
 P.O. BOX 81368  
 LAFAYETTE, LOUISIANA 70598  
 PH. 337-981-0999  
 PH. 337-981-0699

CLASS C SURVEY  
 DATE: AUGUST 9, 2012  
 REVISED DATE: OCTOBER 20, 2015  
 REVISED DATE: AUGUST 31, 2016  
 CORRECTED PLAT  
 2008191\_REVISED\_FINAL\_PLAT\_B-31-2016.dwg  
 JOB: 2008191  
 OCT 8 2016  
 Act# 2-15 - 37-C-80  
 Copy of Original filed with the Clerk of Court's Office  
 COMEAUX ENGINEERING & CONSULTING A PROFESSIONAL CORPORATION  
 P.O. BOX 452  
 BROUSSARD, LOUISIANA 70518



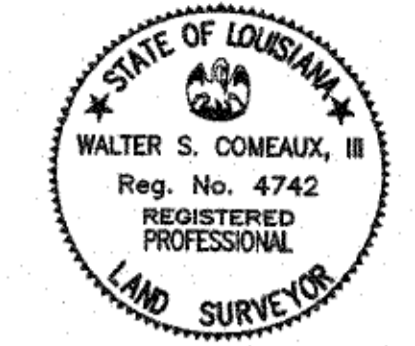
LINE/CURVE	CHORD BEARING	CHORD	ARC	RADIUS
C7	N88°55'34"E	35.38	39.27	25.00'
C8	S01°04'26"W	35.38	39.27	25.00'
C9	S37°02'51"E	69.22	69.37	200.00'
C10	S27°41'51"E	37.98	38.02	200.00'
C11	N33°08'51"W	92.19	93.70	180.00'
C12	N15°08'17"W	20.41	21.03	25.00'
C13	S42°43'13"W	33.60	33.63	50.00'
C14	S39°50'01"W	43.90	45.42	50.00'
C15	N88°05'04"W	43.90	45.42	50.00'
C16	N32°25'58"W	48.38	51.65	50.00'
C17	N26°59'25"W	20.41	21.03	25.00'
C18	N44°55'24"W	42.85	42.73	200.00'
C19	N28°50'11"W	68.54	68.68	200.00'
C20	N17°03'29"W	13.33	13.33	200.00'
C21	N30°39'49"W	75.72	81.69	150.00'
C22	S86°28'29"W	36.85	41.44	25.00'
C23	S22°07'38"W	80.59	83.72	50.00'
C24	S08°59'30"E	18.20	18.71	25.00'
C25	S87°20'38"E	28.95	29.37	50.00'
C26	N74°13'16"E	28.87	30.77	25.00'
C27	N33°33'31"W	33.79	33.60	25.00'
C28	N62°39'26"E	17.06	17.06	25.00'
C29	N62°39'26"E	17.06	17.06	25.00'
C30	S87°20'38"E	28.95	29.37	50.00'
C31	N74°13'16"E	28.87	30.77	25.00'
C32	N33°33'31"W	33.79	33.60	25.00'
C33	N62°39'26"E	17.06	17.06	25.00'
C34	S46°44'28"W	2.45	2.48	25.00'
C35	S01°02'36"W	35.36	39.27	25.00'
C36	S46°44'28"W	2.45	2.48	25.00'
C37	N18°18'05"W	11.82	11.82	25.00'
C38	N38°57'24"E	30.00	30.00	25.00'
C39	N35°17'25"E	81.75	81.75	25.00'
C40	S10°02'36"E	35.36	39.27	25.00'
C41	N51°02'36"W	34.10	34.10	25.00'

**POSSIBLE DRAINAGE SUBDIVISION**  
 LOT 74 & 75  
 CHARLES J. BOUDREAU JR.  
 PALLA BOUDREAU  
 PAF PROPERTIES  
 P.O. BOX 2968  
 LAFAYETTE, LA 70502

**MEADOW RIDGE ESTATES**  
 LOT 56  
 EDWARD & JANET JOHNSON  
 212 ENGLISH GARDENS PRVY.  
 LAFAYETTE, LA 70503

**VERMILION GARDENS SUBDIVISION**  
 LOT 10  
 EDWARD & JANET JOHNSON  
 212 ENGLISH GARDENS PRVY.  
 LAFAYETTE, LA 70503

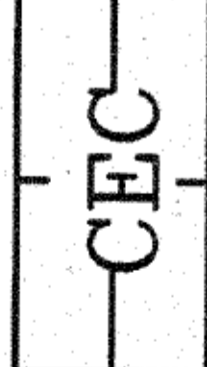
PROPERTY SHOWN



FINAL PLAT OF  
 BROOKSHIRE SOUTH SUBDIVISION PHASE II  
 A SINGLE FAMILY RESIDENTIAL SUBDIVISION  
 LOCATED IN SECTION 72, T-10-S, R-4-E  
 CITY OF LAFAYETTE  
 LAFAYETTE PARISH, LOUISIANA

CLASS C SURVEY  
 DATE: AUGUST 9, 2012

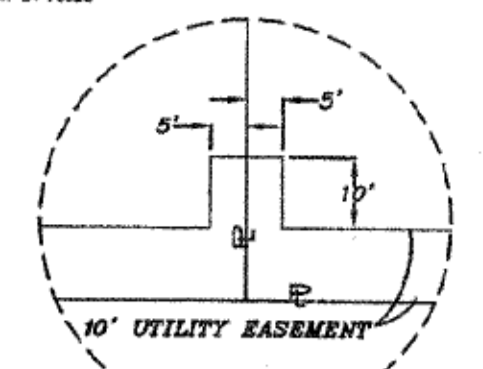
COMEUX ENGINEERING & CONSULTING  
 A PROFESSIONAL CORPORATION  
 P.O. BOX 452  
 BROUSSARD, LOUISIANA 70518



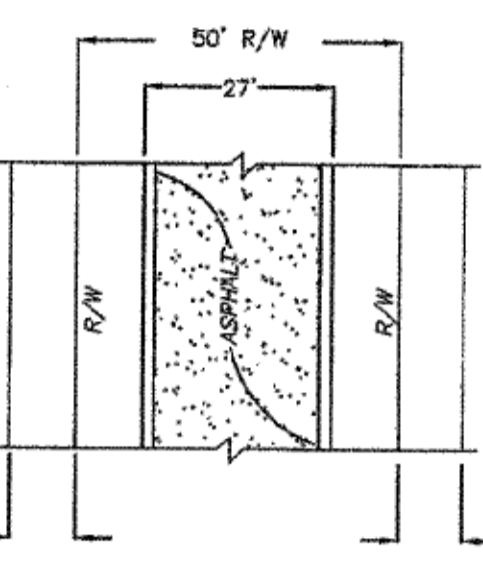
JOB: 2008191

**Legal Description: Phase II**  
 That certain tract of land in Lafayette Parish, Louisiana,  
 being located in Section 72, T-10-S, R-4-E.  
 Said tract contains 18.363 acres and more fully described as follows:

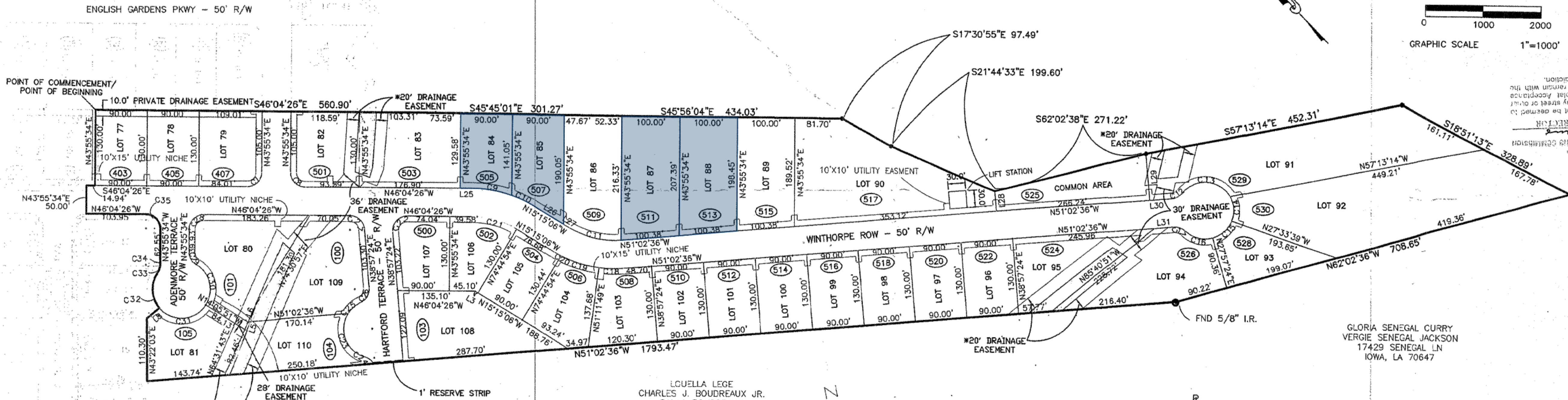
Commencing at the Point of Beginning;  
 thence South 46°04'26" East, a distance of 580.90 feet;  
 thence South 45°45'01" East, a distance of 301.27 feet;  
 thence South 17°30'55" East, a distance of 97.49 feet;  
 thence South 21°44'33" East, a distance of 199.60 feet;  
 thence South 62°02'38" East, a distance of 271.22 feet;  
 thence South 57°13'14" East, a distance of 452.31 feet;  
 thence South 62°02'36" West, a distance of 708.65 feet;  
 thence North 57°02'36" West, a distance of 1913.83 feet;  
 thence North 31°14'16" West, a distance of 319.00 feet;  
 thence North 46°37'57" West, a distance of 789.68 feet;  
 thence North 45°24'37" West, a distance of 420.27 feet;  
 thence North 43°08'46" East, a distance of 208.30 feet;  
 thence North 45°24'37" West, a distance of 617.89 feet;  
 thence North 42°21'39" East, a distance of 571.36 feet;  
 to the Point of Beginning.



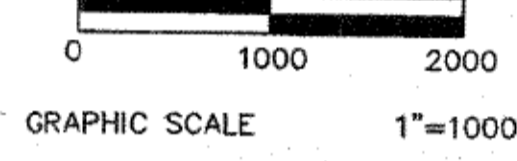
INSET SHOWING UTILITY NICHE



TYPICAL ROAD DETAIL N.T.S.



VICINITY MAP



**FLOOD NOTE:**  
 PORTIONS OF THIS PROPERTY HAVE BEEN DETERMINED TO BE LOCATED IN THE FOLLOWING ZONES AS INDICATED BY THE FLOOD INSURANCE RATE MAP FOR THE PARISH OF LAFAYETTE, LOUISIANA, MAP NUMBER 22055C0065 G EFFECTIVE DATE JANUARY 19, 1996:  
 \*EFFECTIVE FLOOD ZONES  
 \*ZONE X - AREAS DETERMINED TO BE OUTSIDE 500 YEAR FLOOD PLAIN  
 \*ZONE X SHADED - AREAS DETERMINED TO BE WITHIN THE 500 YEAR FLOOD PLAIN  
 \*ZONE AE - AREAS DETERMINED TO BE WITHIN THE 100 YEAR FLOOD PLAIN (BFE 16.0)  
 ANY STRUCTURE ENCLOSED ON THREE OR MORE SIDES, BUILT ON PROPERTY IN THE ONE HUNDRED AS DEPICTED ON THIS PLAT SHALL BE ELEVATED SO AS TO INSURE THE LOWEST FLOOR OF SUCH STRUCTURE IS LOCATED AT A MINIMUM OF ONE FOOT (1') ABOVE THE BASE FLOOD ELEVATION HEIGHT FOR THAT AREA AT THAT TIME.

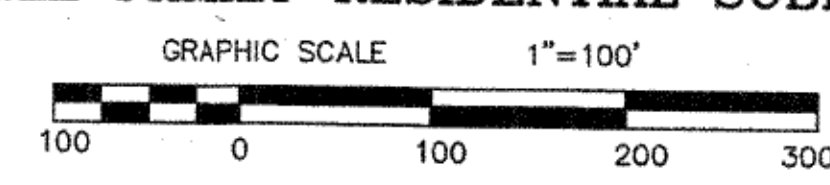
**LEGEND**  
 --- EASEMENT LINE  
 --- R/W LINE  
 --- OVERHEAD ELECTRIC  
 --- UNDERGROUND TELEPHONE  
 (100) MUNICIPAL NUMBER

**ENGINEER/SURVEYOR**  
 COMEAUX ENGINEERING & CONSULTING  
 A PROFESSIONAL CORPORATION  
 WALTER S. COMEAUX, III, P.E., P.L.S.  
 P.E. NO. 23357, P.L.S. NO. 4742  
 P.O. BOX 452  
 BROUSSARD, LOUISIANA 70518  
 PH. 337-837-2210  
 PH. 337-837-2217

**OWNER/DEVELOPER**  
 BROOKSHIRE SOUTH, LLC  
 C/O MR. BAILEY SHIVERS  
 P.O. BOX 81368  
 LAFAYETTE, LOUISIANA 70598  
 PH. 337-981-0999

I CERTIFY THAT THIS PLAT REPRESENTS AN ACTUAL GROUND SURVEY, IN ACCORDANCE WITH THE APPLICABLE MINIMUM STANDARDS OF BOUNDARY SURVEYING, AND THAT NO ENCROACHMENTS EXIST EITHER WAY ACROSS ANY OF THE PROPERTY LINES, UNLESS OTHERWISE SHOWN.

WALTER S. COMEAUX, III, P.L.S., REG. NO. 4742



FINAL PLAT OF  
 BROOKSHIRE SOUTH SUBDIVISION PHASE II  
 A SINGLE FAMILY RESIDENTIAL SUBDIVISION

NO ATTEMPT HAS BEEN MADE BY COMEAUX ENGINEERING & CONSULTING TO VERIFY TITLE, ACTUAL LEGAL OWNERSHIP, SERVITUDES, EASEMENTS, RIGHTS OF WAY OR OTHER BURDENS ON THE PROPERTY OTHER THAN THAT FURNISHED BY THE OWNER OR HIS/HER REPRESENTATIVE.

**NOTE:**  
 REFERENCE PLAT  
 "A MAP OF SURVEY SHOWING ESTATE OF J.C. LANDRY"  
 PREPARED BY R. DOUGLAS MCGEE & ASSOCIATES, LTD.  
 REVISED PLAT DATED SEPTEMBER 24, 1980

**BASIS OF BEARINGS:**  
 OBTAINED FROM GPS OBSERVATIONS  
 USING THE CORS NETWORK FOR CORRECTIONS

**NOTE:**  
 \*20' DRAINAGE EASEMENT FROM APPARENT HIGH BANK AND INCLUSIVE OF CHANNEL ON BOTH SIDE OF CHANNEL.

**NOTE:**  
 1/2 IRON RODS SET AT ALL CORNERS UNLESS OTHERWISE NOTED

REVISED PER ACTION LETTER DATED NOVEMBER 14, 2012

**UTILITIES:**  
 SEWERAGE - LUS  
 WATER - LUS  
 TELEPHONE - BELL SOUTH  
 ELECTRIC - LUS  
 GAS - ATMOS

**STREETS & DRAINAGE - CURB & GUTTER WITH SIDEWALKS**

**ZONING DISTRICT - R-1-A**

**NOTE: PHASE II**  
 NO. OF LOTS - 34  
 TOTAL AREA - 18.363 ACRES  
 R/W AREA - 3.214 ACRES  
 COMMON AREA - 0.342 ACRES  
 TOTAL LOT ACRES - 14.828 ACRES  
 AVERAGE LOT SIZE - 0.436 ACRES (LOT 106)  
 MINIMUM LOT SIZE - 0.255 ACRES (LOT 106)  
 MINIMUM FRONTAGE - 45.45' (LOT 93)

**Legal Description:**  
 That certain tract of land in Lafayette Parish, Louisiana,  
 being located in Section 72, T-10-S, R-4-E.  
 Said tract contains 48.812 acres and more fully described as follows:

Commencing at the Point of Beginning;  
 thence South 45°51'21" East, a distance of 183.78 feet;  
 thence North 43°55'34" East, a distance of 8.88 feet;  
 thence South 46°04'26" East, a distance of 2180.51 feet;  
 thence South 45°45'01" East, a distance of 301.27 feet;  
 thence South 45°56'04" East, a distance of 434.03 feet;  
 thence South 17°30'55" East, a distance of 97.49 feet;  
 thence South 21°44'33" East, a distance of 199.60 feet;  
 thence South 62°02'38" East, a distance of 271.22 feet;  
 thence South 57°13'14" East, a distance of 452.31 feet;  
 thence South 62°02'36" West, a distance of 708.65 feet;  
 thence North 57°02'36" West, a distance of 1913.83 feet;  
 thence North 31°14'16" West, a distance of 319.00 feet;  
 thence North 46°37'57" West, a distance of 789.68 feet;  
 thence North 45°24'37" West, a distance of 420.27 feet;  
 thence North 43°08'46" East, a distance of 208.30 feet;  
 thence North 45°24'37" West, a distance of 617.89 feet;  
 thence North 42°21'39" East, a distance of 571.36 feet;  
 to the Point of Beginning.